

Rejuvenation Instructions Power Cables IT (Injection Tool) Maintenance

The contents of this document are the property of Novinium, Inc. and may not be duplicated or distributed without the express written consent of Novinium. Novinium[®], Ultrinium[™], Tailored Injection[™], Tailored Formulation[™], Perficio[™], N-Rex[™], N-Ter[™] and Single visit – single switch[™] are trademarks of Novinium. Novinium has patents granted or pending on many of the technologies described by these instructions including but not limited to:

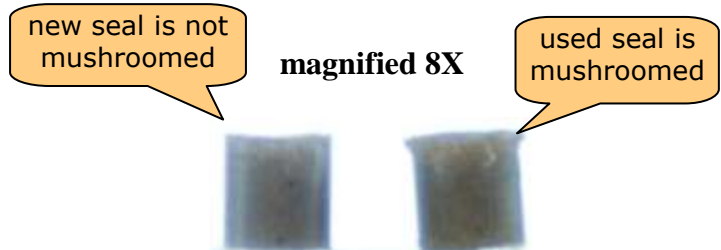
- Ultrinium[™] sustained pressure injection method (U.S. Patent 7,615,247)
- Ultrinium[™] formulation optimization injection method (U.S. Patent 7,611,748)
- Injection Adaptor (U.S. Patent 7,195,504 and 7,538,274)
- Perfectium[™] single switch injection (U.S. Patent 7,353,601)
- Predicting performance of Electrical Power cables (patent pending)
- Formulation of Ultrinium[™] & Perficio[™] components (patents pending)
- N-Rex[™] submarine cable injection process (patent pending)
- N-Ter[™] injection or Novinium thermally enhanced rejuvenation (patent pending)
- Reticular Flash Preventer (RFP) provides safer operation of conventional injection elbows (patent pending)

Version 20100607

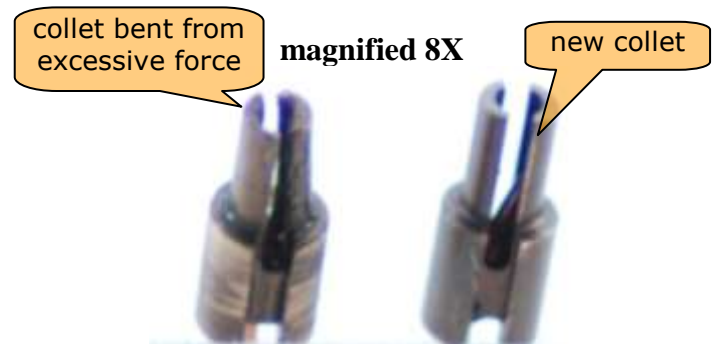
IT (Injection Tool) Maintenance

For an overview of the IT assembly, see the engineering drawing on the last page of this NRI.

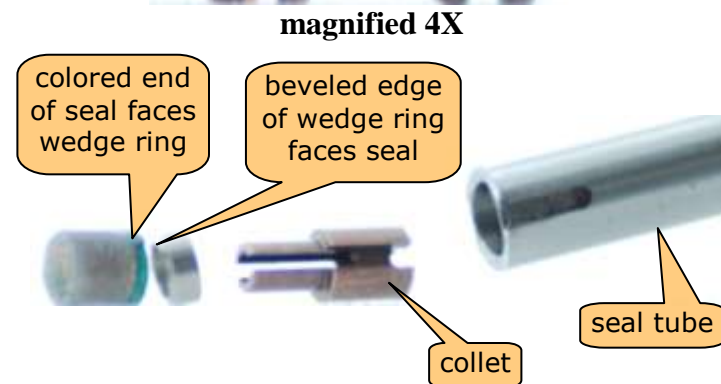
1. With repeated use the plastic seal (**NPN: 1-IT-TSEALS**) will become mushroomed and needs to be replaced. Embedded dirt or abrasion damage to the sealing surface also may require seal replacement. See instruction 3.



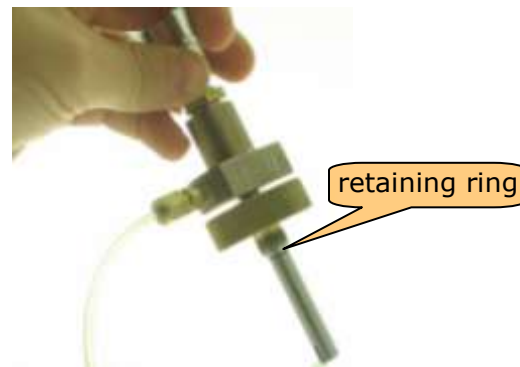
2. If the collet (**NPN: 1-IT-COLLET**) becomes damaged from excessive force it needs to be replaced as described in instruction 3.



3. Insert a new or undamaged collet (**NPN: 0-IT-ITTOOL**) into the seal tube, a wedge ring with the beveled edge facing the seal, and the plastic seal (**NPN: 1-IT-TSEALS**) with the colored end facing the wedge ring. The colored end of the plastic seal marks the end of the seal with an internal bevel. That internal bevel mates with the external beveled edge of the wedge ring.



4. If the retaining ring (**NPN: 1-IT-RRING**) becomes damaged it must be replaced. Remove and discard the damaged retaining ring.



5. To install a new spiral retaining ring (**NPN: 1-IT-RRING**) place the injector tool upside down on a flat surface. Use your finger to hold the single-wire portion of the retaining ring at one of the external notches on the IT seal tube. Utilize a "dental pick" (**NPN: 0-LT-PICK**) or an equivalent tool inside the retaining ring and into the notch on the opposite side of the seal tube to pry the double-wire portion of the ring gently over the edge. Slide the retaining ring down until it seats in the groove.

